

# METER-RITE®

Pole-Top Double-Throw Switch  
Catalog Numbers **R-8208-6, R-8808-6**  
600 Vac  
NEMA 3R Rainproof Enclosure

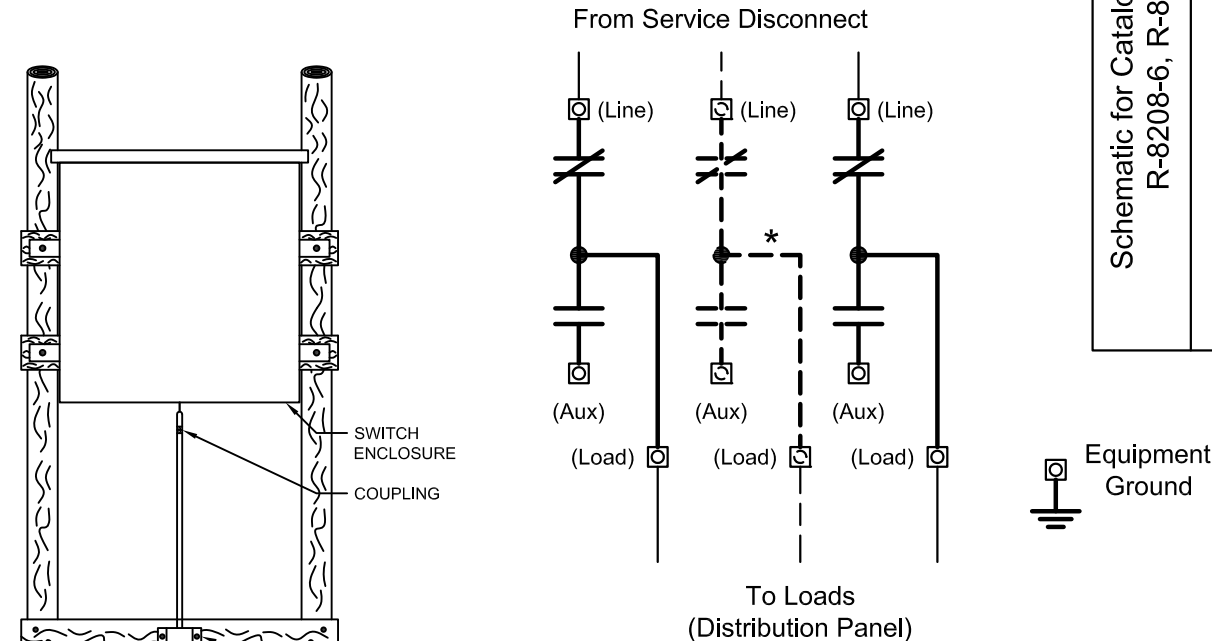
Schematic for Catalog Numbers  
**R-8208-6, R-8808-6**

RONK ELECTRICAL INDUSTRIES, INC.  
NOKOMIS, ILLINOIS

Drawing Number

**2-2726**

Scale	None
Drawn	GMW
Date	12/10/2013
Approved	NCL



\* Center pole not on Cat. No. R-8208-6

## CONNECTING INSTRUCTIONS

1. Connect Rod Link to Operating Mechanism according to Drawing Number 2-2746.
2. Mount the switch near the top of the poles.
3. 1/2" EMT is recommended for the connecting rod between the switch and the operating handle. Attach the desired length of EMT to the stub protruding from the bottom of switch enclosure, but do not attach handle assembly.
4. Pull on rod to operate switch to LINE position.
5. Note LINE - AUX position of handle. Place handle in LINE position and insert handle stub into coupling at bottom of rod without tightening the set screw. Orient handle assembly for alignment with rod with mounting holes against brace. Tighten set screw on coupling, locking handle assembly to rod. Fasten handle assembly to brace, locating its position on the brace with rod hanging freely against stops in switch enclosure.
6. Operate handle to make sure switch is functioning. Switch should snap open and closed as handle is operated. Ground handle and enclosure using ground lugs provided.
7. Fasten U shaped rod guide over operating rod about half way between handle and switch enclosure. Rod guide should depress rod slightly toward brace.
8. Incoming lines should be connected to LINE terminals. Load lines should be connected to LOAD terminals. Standby generator may be connected to AUX terminals.

CATALOG NUMBER	PHASE	AMPS	WIRE RANGE		
			LINE	LOAD	AUX
R-8208-6	1Ø	800 (main) 600 (aux)	750 MCM- 500 MCM CU-AL (2-HOLE LUG)	600 MCM - #2 CU-AL (3-HOLE LUG)	350 MCM - #4 CU-AL (2-HOLE LUG)
R-8808-6	3Ø				

TIGHTENING TORQUE	
SOCKET SIZE (INCH)	TORQUE (IN-LB)
1/8	45
5/32	100
3/16	120
7/32	150
1/4	200
5/16	250
3/8	375
1/2	500
9/16	600

USE COPPER OR ALUMINUM WIRE RATED 75° C, COPPER WIRE RECOMMENDED.  
OXIDE INHIBITING COMPOUND IS RECOMMENDED FOR ALUMINUM WIRE.

**WARNING:** ALL ADJUSTMENTS ON SWITCH HAVE BEEN MADE AT FACTORY AND MUST NOT BE CHANGED IN THE FIELD. IF SWITCH DOES NOT OPERATE PROPERLY CHECK THE HANDLE INSTALLATION ON POLE-TOP UNIT.

Revision Description  
**RE-DRAWN FOR CAD.**

Rev	CN
Date	
BY	<b>D</b>